

### Applicable MIL-STD-810C/D/E/F

Applicable MIL-STD	810C		810D		810E		810F	
	Methods	Procedures	Methods	Procedures	Methods	Procedures	Methods	Procedures
Low Pressure	500.1	1	500.2	1,2	500.3	1,2	500.4	1
High Temperature	501.1	1,2	501.2	1,2	501.3	1,2	501.4	1,2
Low Temperature	502.1	1	502.2	1,2	502.3	1,2	502.4	1,2
Temp. Shock	503.1	1	503.2	1	503.3	1	503.4	1
Solar Radiation	505.1	1	505.2	1	505.3	1	505.4	1,2
Rain	506.1	2	506.2	2	506.3	1,2	506.4	1,2
Humidity	507.1	2	507.2	2,3	507.3	2,3	507.4	1
Salt Fog	509.1	1	509.2	1	509.3	1	509.4	1
Dust	510.1	1	510.2	1	510.3	1	510.4	1
Vibration	514.2	8,10	514.3	1	514.4	1	514.5	1
Shock	516.2	1,2,5	516.3	1,4	516.4	1,4	516.5	1,4

### General

Frequency Range	VHF: 150-174 MHz UHF: 400-420 MHz 450-470 MHz
Channel Capacity	16
Channel Spacing	25KHz/12.5KHz
Operating Voltage	7.4V
Battery	1250mAh (Li-ion)
Battery Life (5-5-90 duty cycle)	9 hours
Frequency Stability	± 5ppm
Operating Temperature	-20°C~+50°C
Antenna Impedance	50 Ω
Dimensions (L×W×H) (with battery, without antenna)	4.37in×2.13in×1.34in
Weight (with antenna & battery)	8.78 oz.

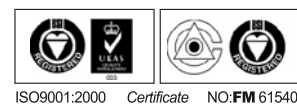
### Transmitter

RF Power Output	5W (VHF) 4W (UHF)
Modulation	16K Φ F3E/8K Φ F3E
Spurious and Harmonics	≤ -21dBm
FM Noise	≥ 40dB
Audio Distortion	≤ 5 %

### Receiver

Sensitivity	0.25/0.28 μ V
Selectivity	55/50dB
Intermodulation	50dB
S/N	40dB
Rated Audio Power Output	500mW
Rated Audio Distortion	≤ 5%

All Specifications are tested according to TIA/EIA-603, and subject to change without notice due to continuous development.



**HYT America, Inc.**

**320 International Parkway, Sunrise, Florida 33325**

Tel: 1-954-846-1011 Fax: 1-954-846-1672 Toll Free: 800-845-1230

[www.hyta.com](http://www.hyta.com)

SHENZHEN HYT SCIENCE & TECHNOLOGY CO., LTD. <http://www.hytcn.com>

HYT is the registered trademark of Shenzhen HYT Science & Technology Co., Ltd. © 2007 HYT Co., Ltd. All Rights Reserved. 2112002B

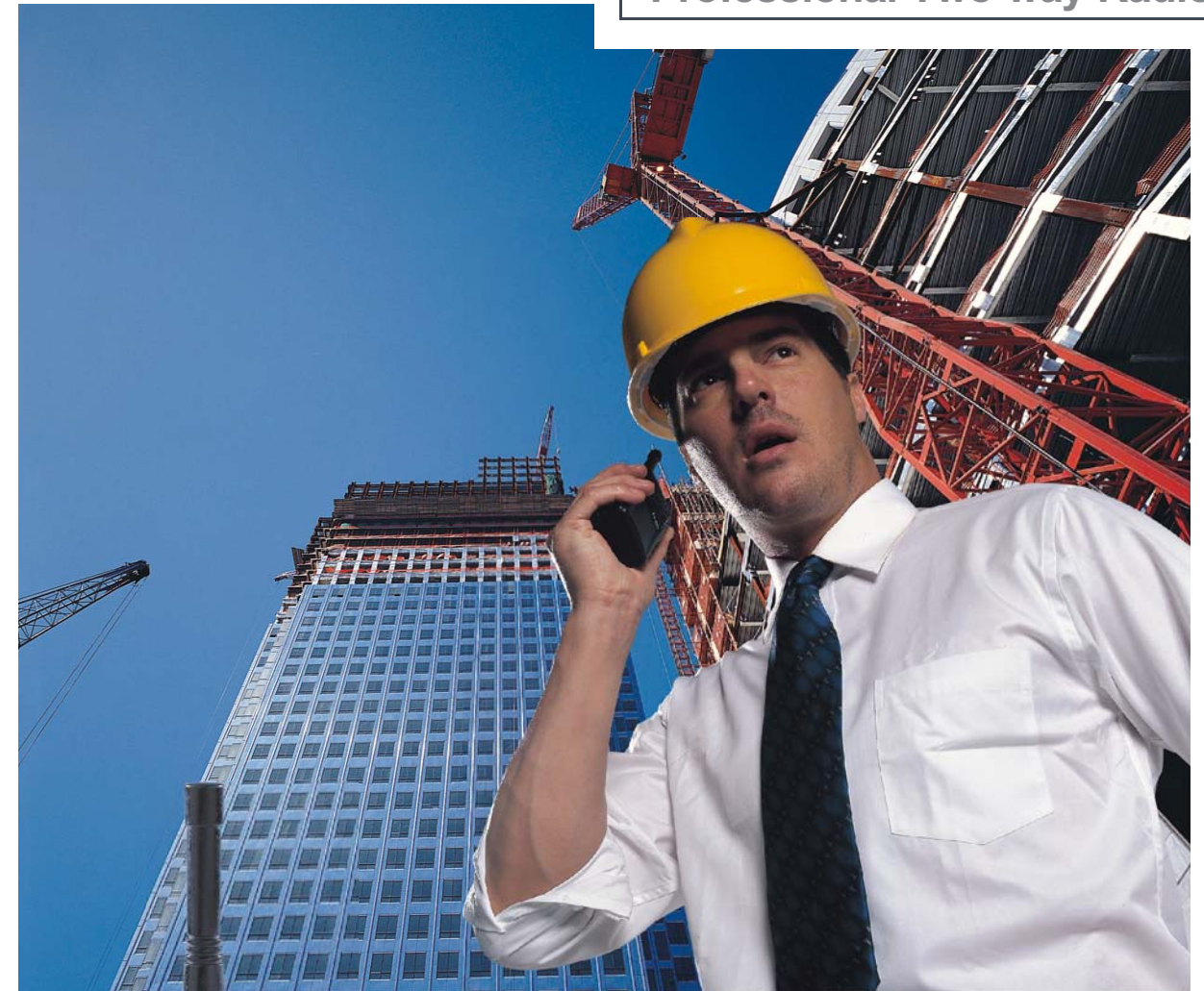
HYT retains right to change the product design and specification. Should any printing mistake occur, HYT doesn't bear relevant responsibility. Little difference between real product and product indicated by printing materials will occur by printing reason.

Ver. NA-TC600-B

Your Local Dealer

## TC-600

### Professional Two-way Radio



# TC-600

*The Cost Effective Professional Radio*

- Wide Communication Range
- High-quality Audio
- Rugged and Durable
- Extended Operation Time

The combination of advanced performance and cost efficient production makes the TC-600 a strong option for growing organizations, as well as any organization concerned with security and quick response. It has been ergonomically designed to handle easier, with bigger knobs and controls that can be easily operated even wearing heavy gloves. It offers a wide range of features and a rugged design, all in a surprisingly lightweight radio ( 8.78 oz. with standard Li-ion battery ). Experienced users will appreciate many of the TC-600's enhancements and design features. The TC-600 also offers an extremely high level of sound clarity and dynamics for a professional radio at this price.

## Key Features

### Wide Communication Coverage

High transmit power accommodates wide communication coverage. Low transmit power is for limited coverage area.

### High-quality Audio

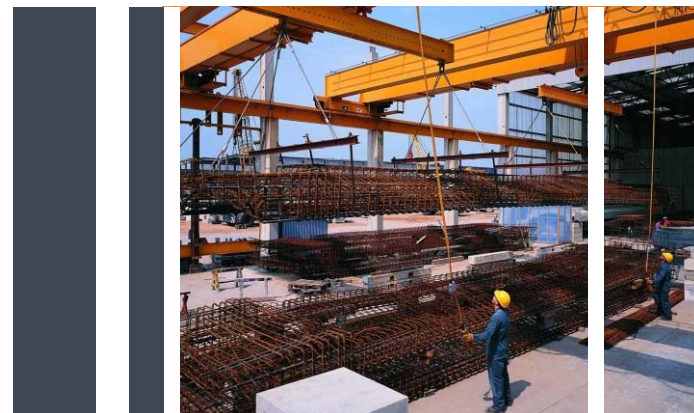
Audio quality is critical for effective communications. The speaker delivers crisper, clearer and stronger audio because of improved acoustic mechanics, allowing users to continue communicating even in noisy and harsh conditions.

### Rugged and Durable

The TC-600 is durable enough to withstand 1.5m drop and meet MIL-STD-810 C/D/E/F.

### Extended Operation Time

Li-ion battery provides 9hr talktime at a lighter weight, for greater productivity.



## Applications

### Construction, Transportation, Logistics and Warehouse

The speaker delivers crisper, clearer and stronger audio because of improved speaker mechanics. You will be assured of reliable communication even in noisy and harsh conditions, such as Construction, Transportation, Logistics and Warehouse applications.



### Hospitality

The lightweight and compact TC-600 series allow you to serve your guests faster with increased mobility, without being weighed down by your communication tools. In a service business where customer satisfaction is critical, such as Hotels, Restaurants, Education and Retail Markets, two-way radios are key to information sharing, staff redeployment and coordination services.

## Main Features

### High/Low Power Switchable

High/Low power is switchable via the programmed key on a per channel basis, tailored for the users environment. Low output power preserves battery life when communication within limited range coverage; while high output power optimizes range coverage when further distance required.

### Programmable 12.5kHz / 25kHz Channel Spacing

The feature enables flexibility and easy migration of channel spacing requirements when the need arises, with no need to buy new radios.

### DTMF ANI Encode

DTMF ANI can be set on or off on a per channel basis.

### 2-Tone Encode and Decode

The 2-Tone encode and decode functions are assignable on a per channel basis. An incoming message is signaled with audio and visual alert on the top mounted LED.

### Monitor

This feature is especially helpful for adjusting volume or receiving a weak signal, which allows continuous Channel monitoring.

## Main Features

### Battery Save

The Battery Save feature is automatically activated once the activity on the channel and operation cease, for extended operation time.

### Low Battery Alert

For extra convenience, the top-mounted LED flashes red to alert users to recharge the battery should the battery level run low.

### Busy Channel Lockout

This feature further improves channel management by preventing transmission if another talk group is already on the air.

### Time-out Timer(TOT)

This feature allows for more efficient use of channels by limiting the amount of time of each transmission.

### Wired Clone

Cloning enables duplication of radios in the field via a simple interface cable, without the use of a PC or special equipment.

### PC Programming

This feature allows you to customize each radio to meet your application.

### Squelch Tail Elimination

This function will minimize the annoying audio outputs that occur on the receiver upon completion of a transmission.

### Selectable Squelch Level (0-9)

The purpose of squelch is to mute audio output from the speaker when no signals are present. The higher the squelch level selected, the stronger the signals must be to receive. The appropriate squelch level depends on ambient RF noise conditions.

### Priority Channel Scan

Priority scan permits scanning of all channels while simultaneously monitoring a priority channel, allowing for activity even while receiving a call on another non-priority channel.

# TC-600

## The Cost Effective Professional Radio

## Accessories

Standard Accessories			
Antenna (VHF)	Antenna (UHF)	Strap RC03	
Charger (for Li-Ion batteries) CH10L03	Li-Ion Battery (1250mAh) BL1203	Switch Power Ps1014 (100-240VAC)	Short spring belt clip Bc11
Optional Accessories			
		Behind-the-head Earpiece with on-MIC PTT ECM07	
Antenna (UHF)	Multi-unit Rapid-rate Charger (for Li-Ion Batteries) MCL08	Receive-only Earpiece for use with remote speaker microphone ESS07	Receive-only Earpiece with transparent audio tube for use with remote speaker microphone ESS08
Remote Speaker Microphone SM08M2	D-Earset with in-line Mic & PTT EHM11	D-Earset with Boom Mic & in-line PTT EHM12	Earbud with on-MIC PTT ESM08
Earpiece with in-line PTT & transparent acoustic tube EAM08	Earbud with in-line PTT ESM07	Light-weight, Single-ear Headset with in-line PTT ECM08	Earpiece with in-line PTT & transparent acoustic tube EAM07
Leather Carrying Case (Swivel) LCBN37	Leather Carrying Case (Swivel) LCBN38	Cheat Pack LCBN13	Transparent Waterproof Bag LCBY03
Programming Cable (USB port) PC26	Universal Programming kit PC08	Cloning Cable CP02	Programming Cable (COM port) PC19